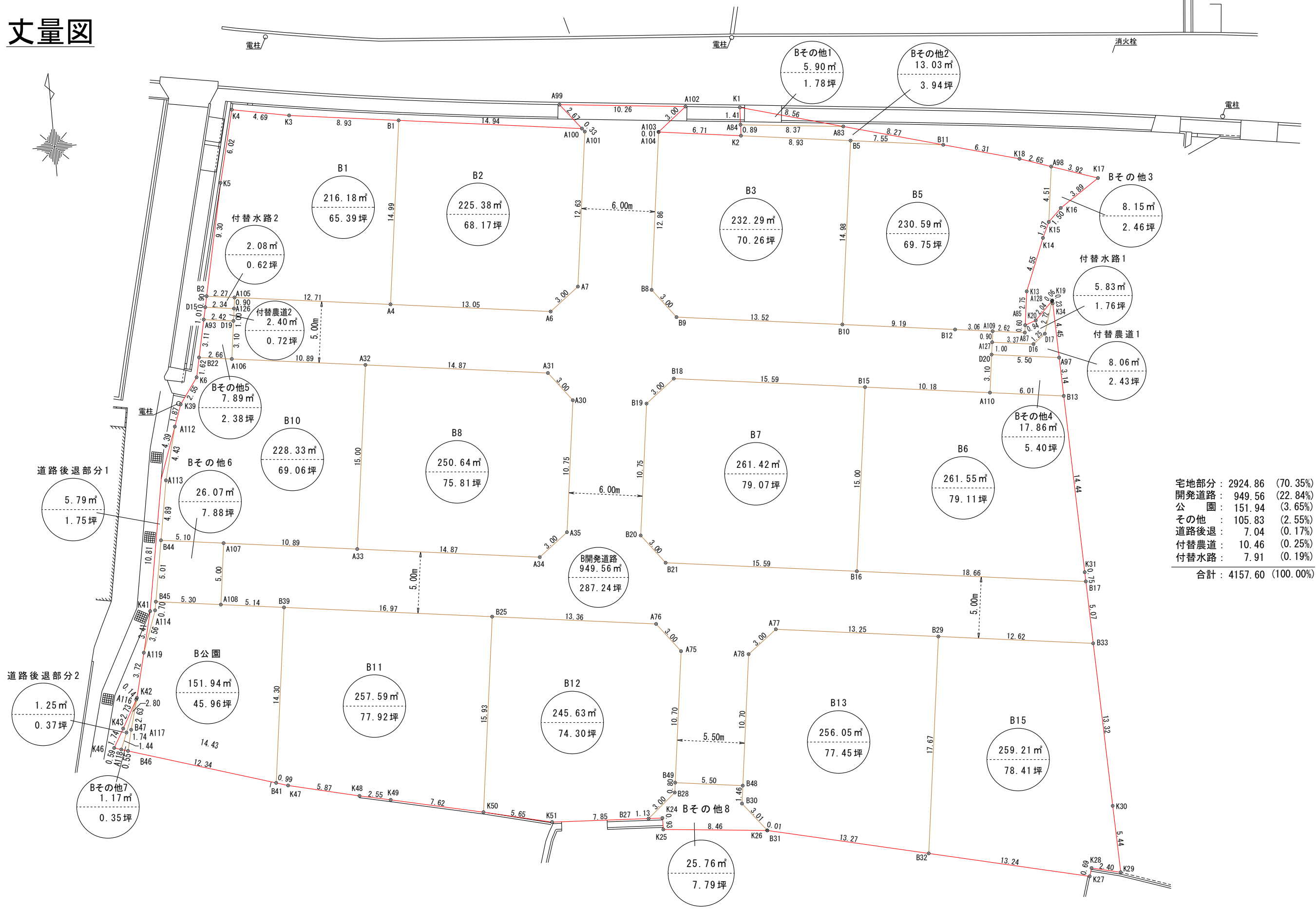
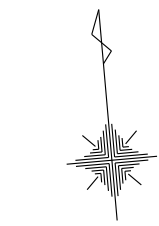


丈量図



宅地部分	2924.86	(70.35%)
開発道路	949.56	(22.84%)
公園	151.94	(3.65%)
その他	105.83	(2.55%)
道路後退	7.04	(0.17%)
付替農道	10.46	(0.25%)
付替水路	7.91	(0.19%)
合計	4157.60	(100.00%)

土地の所在	高松市西山崎町字川向上/ 高松市川部町字池ノ坊	縮尺	1 / 300	測量年月日	令和 年 月 日	特記事項		作製者	石井登記測量事務所
土地の地番	581-1, 582-1, 583-1, 583-2/ 43-3, 43-4 および地先農道・水路	図面番号		作製年月日	令和 6年 3月 2日				土地家屋調査士 石井敦雄 高松市春日町 1643-9 電話 843-3131

座 標 求 積 表

Table B1: Land area calculation with columns for point number, Xn, Yn, and (Xn+1 - Xn-1)Yn. Includes sub-totals for area and ground area.

Table B2: Land area calculation with columns for point number, Xn, Yn, and (Xn+1 - Xn-1)Yn. Includes sub-totals for area and ground area.

Table B3: Land area calculation with columns for point number, Xn, Yn, and (Xn+1 - Xn-1)Yn. Includes sub-totals for area and ground area.

Table B5: Land area calculation with columns for point number, Xn, Yn, and (Xn+1 - Xn-1)Yn. Includes sub-totals for area and ground area.

Table B6: Land area calculation with columns for point number, Xn, Yn, and (Xn+1 - Xn-1)Yn. Includes sub-totals for area and ground area.

Table B7: Land area calculation with columns for point number, Xn, Yn, and (Xn+1 - Xn-1)Yn. Includes sub-totals for area and ground area.

Table B8: Land area calculation with columns for point number, Xn, Yn, and (Xn+1 - Xn-1)Yn. Includes sub-totals for area and ground area.

Table B10: Land area calculation with columns for point number, Xn, Yn, and (Xn+1 - Xn-1)Yn. Includes sub-totals for area and ground area.

Table B11: Land area calculation with columns for point number, Xn, Yn, and (Xn+1 - Xn-1)Yn. Includes sub-totals for area and ground area.

Table B12: Land area calculation with columns for point number, Xn, Yn, and (Xn+1 - Xn-1)Yn. Includes sub-totals for area and ground area.

Table B13: Land area calculation with columns for point number, Xn, Yn, and (Xn+1 - Xn-1)Yn. Includes sub-totals for area and ground area.

Table B15: Land area calculation with columns for point number, Xn, Yn, and (Xn+1 - Xn-1)Yn. Includes sub-totals for area and ground area.

Table B公園: Land area calculation with columns for point number, Xn, Yn, and (Xn+1 - Xn-1)Yn. Includes sub-totals for area and ground area.

Summary table with columns for land location, scale, measurement date, and creator. Location: 高松市西山崎町字川向上 / 高松市川部町字池ノ坊. Scale: 縮尺 1. Measurement date: 令和 5年10月31日. Creator: 石井登記測量事務所.

